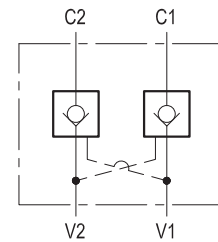
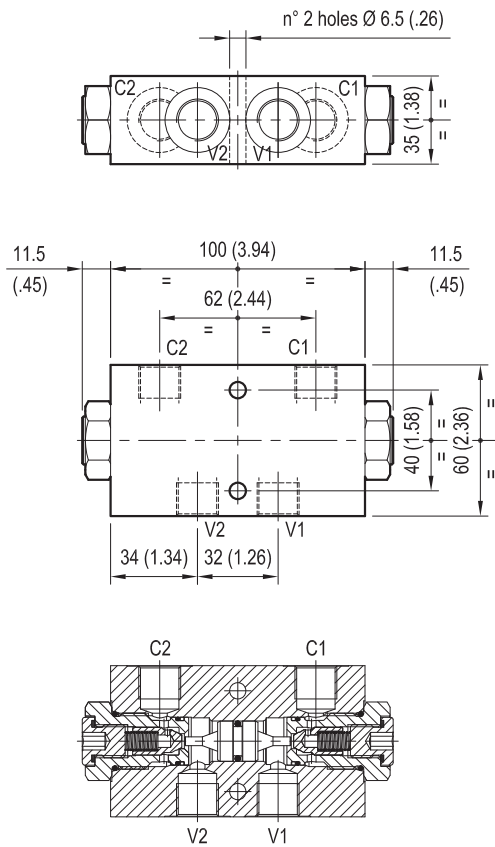


PILOT OPERATED CHECK, DUAL

VSO-DE

05.53.43 - X - Y - Z



TECHNICAL DATA

Operating pressure: up to 210 bar (3000 psi)

Max flow: 30 l/min (8 gpm)

Aluminium body

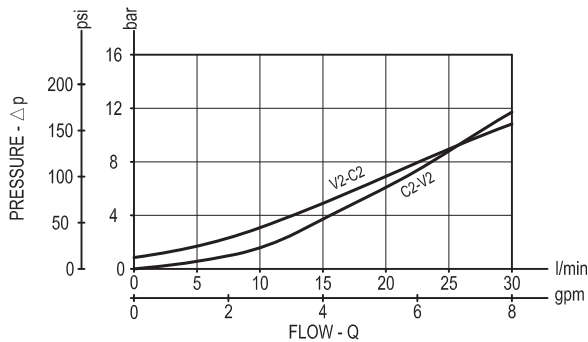
NOTE: aluminium bodies are often strong enough for operating pressures exceeding 210 bar (3000 psi), depending from the fatigue life expected in the specific application. If in doubt, consult our Service Network.

Weight: 0.9 kg (2 lbs)

Pilot ratio: 7 : 1

The version with O-Ring and heavier spring is generally recommended.

Flow is allowed to pass in one direction (V1 to C1 or V2 to C2), then the valve remains closed (checked) in both reverse directions (C1 to V1 or C2 to V2) in order to hold and lock in position the cylinder or other actuators; reverse flow is possible only when sufficient pilot pressure is applied at V2 or V1, which act as cross connected pilot ports, and the pilot piston lifts the poppet from its seat overcoming cylinder port pressure.



X	O-RING ON PILOT PISTON
00	No O-Ring
10	With O-Ring

Z	SPRINGS		
	Cracking pressure bar (psi)	Ordering code	
X=00 00	1 (15)	03.51.01.317	
X=10 01	4.5 (65)	03.51.01.318	

Y	PORT SIZE
	V1-V2-C1-C2
97	G 3/8